



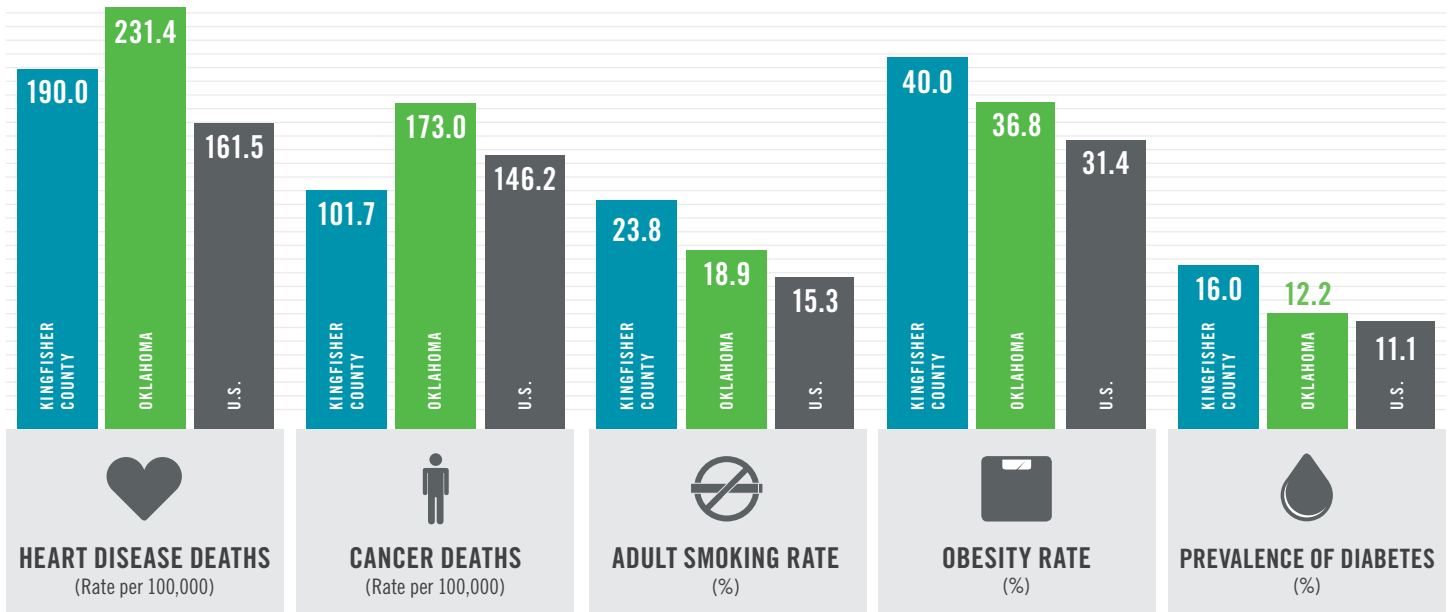
### Health Indicators

OKLAHOMA STATE DEPARTMENT OF HEALTH, 2019

COUNTY

OKLAHOMA

U.S.



### Healthy Living Program Grants

TSET Healthy Living Program grants are designed to prevent cancer and cardiovascular disease at the local level by working with businesses, city governments, community organizations and schools to encourage healthier lifestyles.

**Grantee:** Kingfisher County Health Department **FY21** **\$175,000**  
Serving Blaine and Kingfisher counties

**Grantee:** Kingfisher County Health Department **FY16-FY20** **\$1,284,726**  
Serving Blaine and Kingfisher counties

### Incentive Grants

TSET Healthy Incentive Programs for Schools and Communities promote wellness through grants to schools, school districts and local communities that adopt policies and strategies that encourage healthier lifestyles.

#### Healthy Schools Incentive Grants

Dover Public Schools .....	\$15,000
Lomega Public School.....	\$3,000
Okarche Public Schools .....	\$3,000

Oklahoma Tobacco Helpline

**1 800 QUIT NOW**

1-800-784-8669 **OKhelpline.com**

The Oklahoma Tobacco Helpline provides free telephone and web-based tobacco cessation “coaching” sessions and free nicotine patches, gum and lozenges. Since 2003, the Helpline has served more than 450,000 Oklahomans, saving an estimated \$18 million each year in direct medical costs from tobacco users who have quit with the Oklahoma Tobacco Helpline.

County Fiscal Year 2020:

**86**

County Cumulative:

**1399**

# TSET: INVESTING IN HEALTH

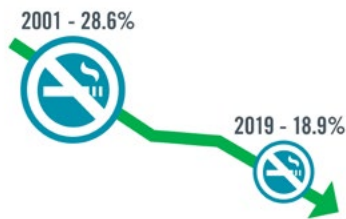
Established by voters, the Oklahoma Tobacco Settlement Endowment Trust (TSET) is a state grantmaking trust devoted to preventing cancer and cardiovascular disease, Oklahoma's leading causes of death. By awarding grants to schools, communities, state agencies and partner organizations, TSET works to improve the health of Oklahoma's citizens. It also funds research and emerging opportunities in the public and private sectors. TSET initiatives are addressing Oklahoma's most pressing public health issues — and creating healthier places for all Oklahomans to live, work, learn and play.

BECAUSE OF TSET,  
OKLAHOMA SMOKING RATES HAVE DROPPED

**10**  **TIMES FASTER**  
THAN SIMILAR STATES.\*

\*According to an independent study conducted by professors and scientists from the University of Wisconsin School of Medicine and Public Health and the University of Oklahoma.

SMOKING PREVALENCE 18.9%



MORE THAN  
**450,000**  
Oklahomans have been served by the  
Oklahoma Tobacco Helpline  
SINCE 2003

**\$1.24**  
**BILLION**  
IN DIRECT MEDICAL  
COSTS AVOIDED

## Medical Costs In Oklahoma Associated With:

OBESITY:

**\$1.72 BILLION**

IN MEDICAL EXPENDITURES

- 1 IN 6 HIGH SCHOOL STUDENTS IS OBESE
- 1 IN 6 HIGH SCHOOL STUDENTS IS OVERWEIGHT
- 1 IN 3 ADULTS IS OBESE

SMOKING:

**\$1.62 BILLION**

IN DIRECT HEALTHCARE COSTS

- 7,500 ADULT DEATHS EACH YEAR
- 1,300 KIDS BECOME DAILY SMOKERS EACH YEAR
- \$172 MILLION IS SPENT BY TOBACCO INDUSTRY ANNUALLY TO MARKET TOBACCO IN OKLAHOMA



Through the funding of cancer research, grants focused on health and health communication interventions, TSET is saving lives.