



3800 N. Classen Blvd., Suite 200
Oklahoma City, OK 73118
tset.ok.gov 405.521.3888

OKLAHOMA COUNTY

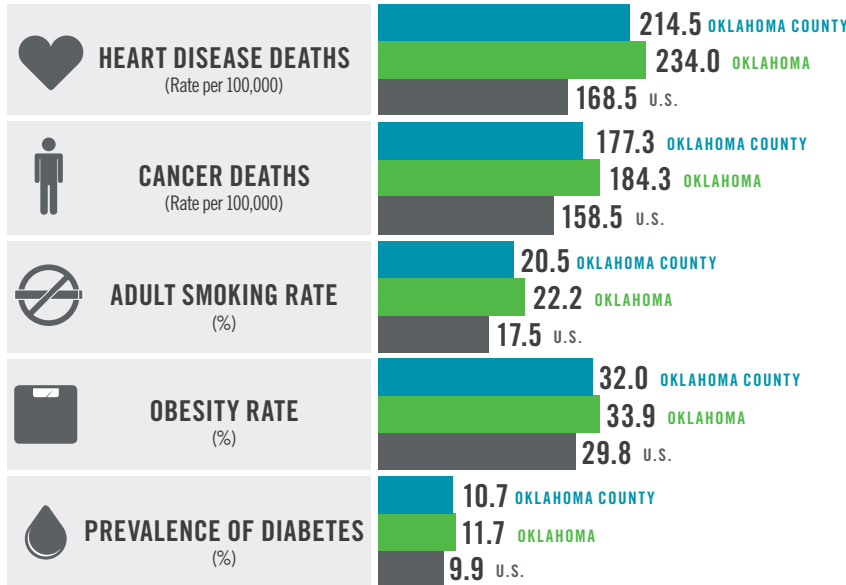
TSET Overview

In 2000, Oklahoma voters overwhelmingly chose to create TSET, the Tobacco Settlement Endowment Trust. Oklahoma's forward-looking choice enables strategic programmatic investments in healthy communities, statewide organizations, and life-saving research. TSET extends the opportunity for all Oklahomans to have better lives through better health – for generations to come.

Health Indicators

COUNTY OKLAHOMA U.S.

OKLAHOMA STATE DEPARTMENT OF HEALTH, 2015



COUNTY CUMULATIVE : \$5,763,190

Healthy Living Program Grants

Grantee: Oklahoma City - County Health Department

Cumulative: \$1,426,000

Incentive Grants

Healthy Schools Incentive Grants

Grantee: Edmond Public Schools

Cumulative: \$20,000

Grantee: Oakdale Public Schools

Cumulative: \$5,000

Grantee: Oklahoma City Public Schools

Cumulative: \$50,000

Grantee: Millwood High School

Cumulative: \$1,500

Grantee: Millwood Public Schools

Cumulative: \$5,000

Grantee: Western Heights Public Schools

Cumulative: \$10,000

Grantee: Millwood Elementary Learning Academy

Cumulative: \$1,500

Grantee: Millwood Arts Academy

Cumulative: \$1,500

Grantee: Martin Luther King Jr. Elementary School
- Oklahoma City

Cumulative: \$2,000

Community Grants

Communities of Excellence in Tobacco Control

Lead Agency: Oklahoma City - County Health Department

FY2005-2015: \$3,171,290

Communities of Excellence in Nutrition and Fitness

Lead Agency: Oklahoma City - County Health Department

FY2011-2015: \$1,069,400

Oklahoma Tobacco Helpline Participants

The Oklahoma Tobacco Helpline provides free telephone and web-based tobacco cessation "coaching" sessions and free nicotine patches, gum and lozenges. Since 2003, the Helpline has served more than 300,000 Oklahomans, saving an estimated \$18 million each year in direct medical costs from tobacco users who have quit with the Oklahoma Tobacco Helpline.

County Fiscal Year 2016:

7,090

County Cumulative:

68,369

Medical Costs In Oklahoma Associated With:



SMOKING

\$1.62 BILLION

IN DIRECT HEALTHCARE COSTS

- 7,500 ADULT DEATHS EACH YEAR
- 2,400 KIDS BECOME DAILY SMOKERS EACH YEAR
- \$169 MILLION IS SPENT BY TOBACCO INDUSTRY ANNUALLY TO MARKET TOBACCO IN OKLAHOMA

OBESITY

\$1.72 BILLION

IN MEDICAL EXPENDITURES

- 17% OF OKLAHOMA YOUTH ARE OBESE
- 15% OF OKLAHOMA YOUTH ARE OVERWEIGHT
- 1 IN 3 ADULTS ARE OBESE

TSET STATEWIDE GRANTS



Healthy Living Program Grant Coverage

Oklahoma State University Medical Authority Residency Program (OSU)

Oklahoma Hospital Association Wellness Grant

Oklahoma Medical Loan Repayment Program (PMTc)

Oklahoma Department of Mental Health and Substance Abuse Wellness Grant

Oklahoma Health Care Authority Wellness Grant

STATEWIDE GRANTS - FY17 BUDGETED TOTAL \$16,246,000



Statewide Grants

TSET provides grants to communities and health systems to prevent and reduce tobacco use and obesity. Grantees submit annual budgets and work plans. In some cases, grantees are able to leverage federal dollars through the Oklahoma Health Care Authority to expand reach and impact. TSET funds about 40 to 50 percent of the total program cost for health systems grants.